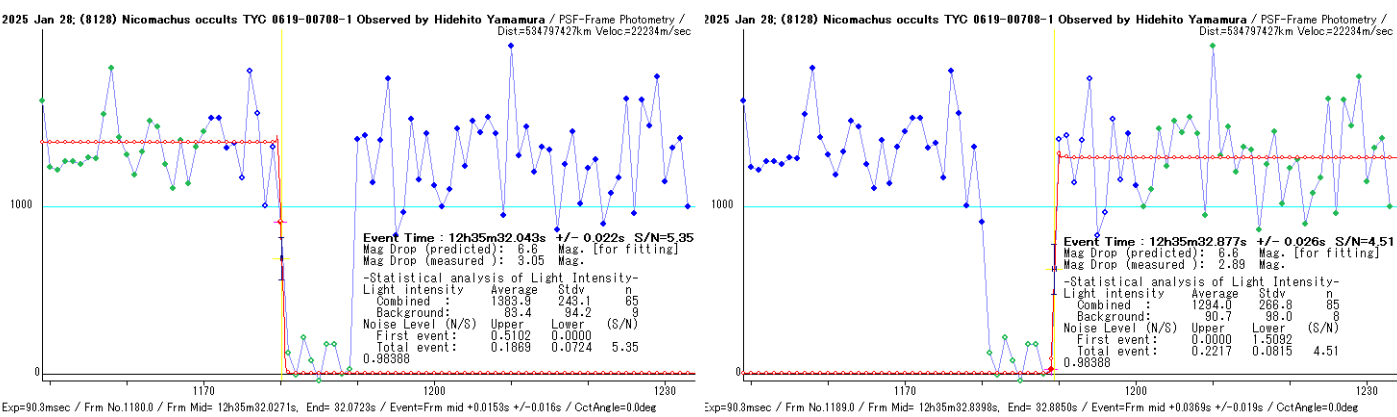
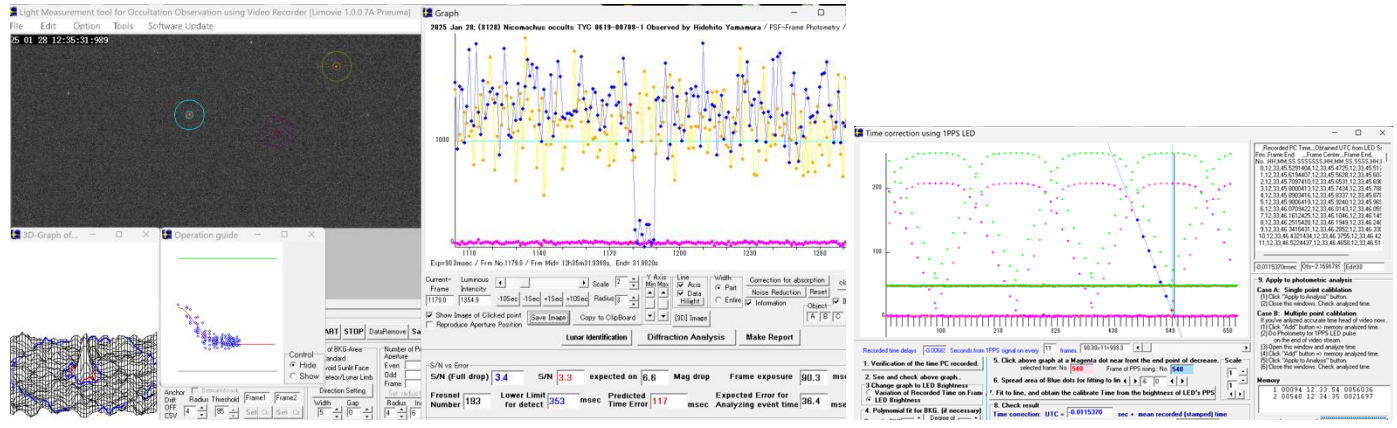
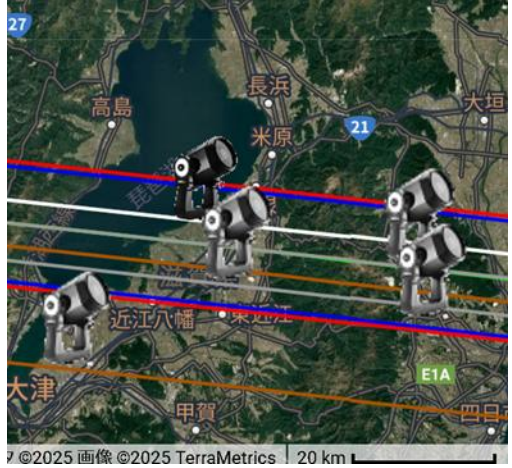


20250128_(8128)Nicomachus Occults TYC 0 619-00708-1

Hidehito Yamamura



***** Asteroid occultation Report *****
 [Date] 2025.1.28 [Approx hour] 12.5
 [Star] Tycho2 0619-00708-1 VMag=12.50 RMag=12.47
 [Asteroid] (8128)Nicomachus 19.07 mag.
 [Observer] 1: Hidehito Yamamura 2:
 [Location] Hikone, Shiga, JPN
 [Longitude] 136o10'20.4" E
 [Latitude] 35o13'56.4" N
 [Altitude] 87m
 [Datum] WGS84
 [Event time] D: 12h35m32.043s +/- 0.022s (UTC) S/N=5.35
 R: 12h35m32.877s +/- 0.026s (UTC) S/N=4.51
 [Predicted Time error] 0.117 sec [RUWE]
 [Recorded] From 12h33m46s
 To 12h36m20s



[Mag. drop]
 D: Measured: Mag Drop (measured) : 3.05 Mag. ; Predicted: Mag Drop (predicted): 6.6 Mag. [for fitting]
 R: Measured: Mag Drop (measured) : 2.89 Mag. ; Predicted: Mag Drop (predicted): 6.6 Mag. [for fitting]

[Telescope] Aperture: 20cm Type: SCT F=3.3
 [Camera] Analog or Digital video , Model= ASI290MM
 [Exposure] Set: 90.3msec, Measure: 90.3msec
 [Setting] Area: 1504x660 ; Binning=2
 Gain: 502 ; Brightness: 211 ; High Speed Mode: Off
 [Time keep] GPS ; Model: GT902MGG
 [Evidence] GPS Time Log : Recorded ; Screen shot: Recorded
 [Condition] Stability: Steady Transparency: Clear
 [Remarks]
 [Additional comment]
 Mag drop使用

観測地: 滋賀県彦根市薩摩町 農道

個別の解析図、xmlファイル、Light CurveTextファイル等は以下にあります。
<https://www.data-box.jp/pdir/c8401b37927b400b9678500a16f3b0fb>

