

(6136)Gryphon occults UCAC4 353-188773

***** Asteroid occultation Report *****

[Date] 2025. 9.14 [Approx hour] 12.2
[Star] UCAC4 353-188773 VMag=13.04 RMag=12.31
[Asteroid] (6136)Gryphon 16.84 mag.

[Observer] 1: Katsuhiko Kitazaki 2:
[Location] Musashino, Tokyo, JP
[Longitude] 139o33'41.2" E
[Latitude] 35o42'37.0" N
[Altitude] 66m
[Datum] WGS84

[Event time] D: 12h01m52.025s +/- 0.020s (UTC) S/N=7.22
R: 12h01m54.301s +/- 0.016s (UTC) S/N=9.29 Ctt=50.3
[Predicted Time error] 0.536 sec [RUWE] 0.95

[Recorded] From 12h1m30s
To 12h2m30s

[Mag. drop] D: Measured: Mag Drop (measured): 2.79 Mag. ; Predicted:
Mag Drop (predicted): 3.8 Mag.
R: Measured: Mag Drop (measured): 2.80 Mag. ; Predicted:
Mag Drop (predicted): 3.8 Mag.

[Telescope] Aperture: 40cm Type: Other F=2.5 (Reducer x0.25)
[Camera] Analog or Digital video , Model= ASI290MM
[Exposure] Set: 126.0msec, Measure: 126msec
[Setting] Area: 1936x800 ; Binning=2
Gain: 400 ; Brightness: 24 ; High Speed Mode: Off
[Time keep] GPS ; Model: GT502MGG (PPSPUcorrection -0.0133403s)
[Evidence] GPS Time Log : Recorded ; Screen shot: Recorded

[Condition] Stability: Strong flickering Transparency: Clear
[Remarks] Step-like features are observed before and after the Mag Drop
in the light curve. The amplitude also decreases in those regions. However, since
the Mag Drop is very small, it is impossible to determine whether these are truly
steps.

[Additional comment]
Capture : ZWO ASI290MM imaging data to PC using SharpCap4.1.13502.0
Photometry analysis : Analyzed with software.limovie1.0.1.8 Pneuma
limovie setting: Photometry method : PSF photometry
(Sharp4.1 ON,Tracking OFF, Linked Tracking=ON, Star's Angular
Diameter=ON)
Data Release Site
https://drive.google.com/drive/folders/1v9pwtoPcxSLOxYK_hhWEz7GPoAg
QC6K5?usp=sharing

<Observations>

<Event>

<Date>2025|9|14|12.2</Date>

<Details>

<Star>UCAC4|353-

188773|0||0.000000000|0.000000000|0.00|0.00|0.00|0|0.00000000|0.00000
00|25.00|25.00|25.00|0</Star>

<Asteroid>6136|Gryphon|0.00000000|0.00000000|0.00000000|0.00000000|0.00
00000|0.00000000|1.00000|0.00000|0.0|1.0|20.00</Asteroid>

</Details>

<Observations>

<Observer>

<ID>1|Katsuhiko Kitazaki||0|Musashino, Tokyo|JP|+139 33
41.2|+35 42 37.0|66| |40|6|a|a</ID>

<Conditions>3|1|8.25||Step-like features are observed before and
after the Mag Drop in the light curve. The amplitude also decreases in those

regions. However, since the Mag Drop is very small, it is impossible to determine
whether these are truly steps.</Conditions>

<D>12 1 52.025|D|0.020||| </D>

<R>12 1 54.301|R|0.016||| </R>

</Observer>

</Observations>

<LastEdited>2023|7|17</LastEdited>

</Event>

</Observations>

Text-based Light curve

(6136)_20250914_120147_Katsuhiko_Kitazaki.dat

Date: 2025-9-14 12:1:47.94: 10.58: 85

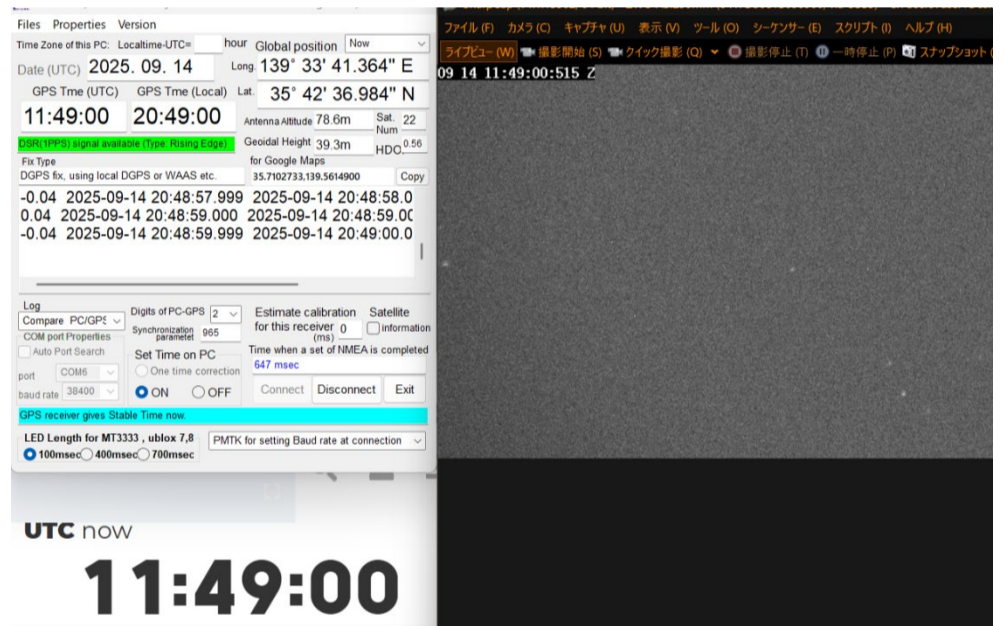
Star: 0: 0: 0: 0: 0-0-0: 353-188773

Observer: +139:33:41.2: +35:42:37.0: 66: Katsuhiko Kitazaki

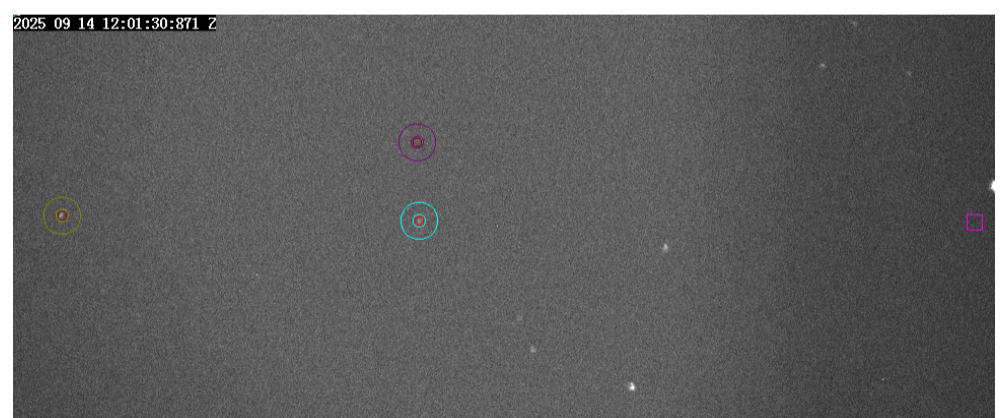
Object: Asteroid: 6136: Gryphon

Values:755:889:764:968:644:709:969:838:694:816:922:1025:795:691:934:954:7
74:592:767:733:721:769:750:849:849:905:895:906:913:764:801:828:751:104:13
:-48:116:-13:45:85:116:-3:87:125:30:56:-56:58:6:
62:154:748:740:839:771:764:772:983:1073:764:832:818:840:877:887:922:912:7
72:693:732:836:900:857:751:657:871:738:729:972:857:860:854:922:791:865

Time Evidence in seconds in UTC

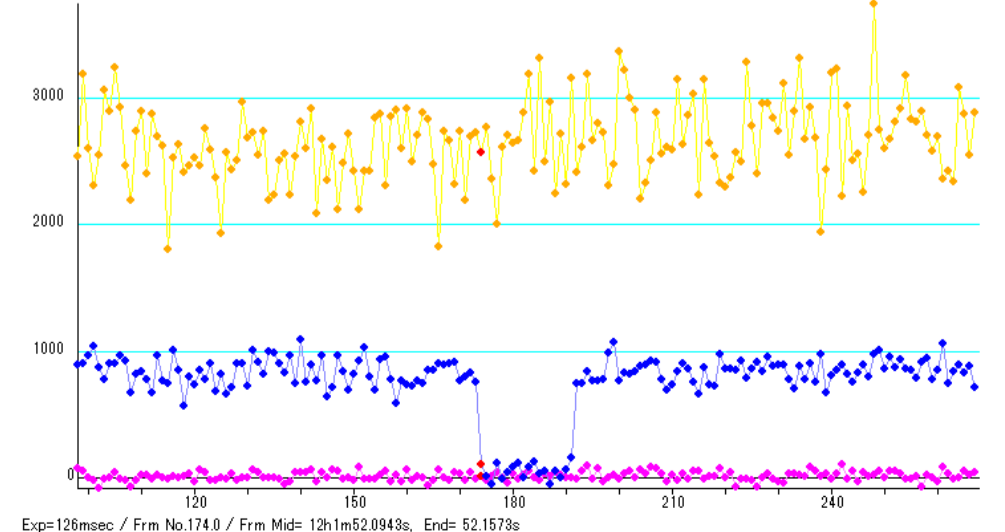


Target Star Position

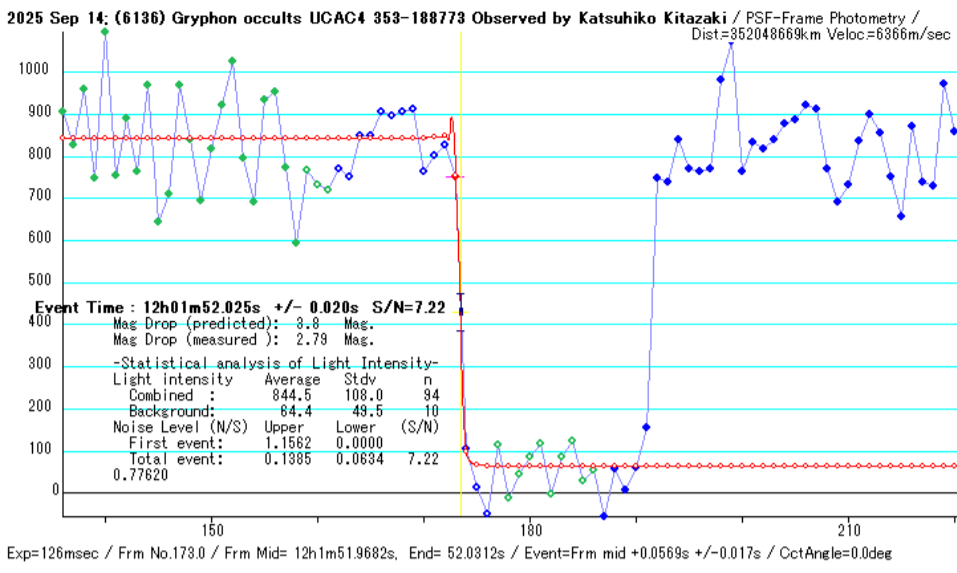


Light curve

2025 Sep 14: (6136) Gryphon occults UCAC4 353-188773 Observed by Katsuhiko Kitazaki / PSF-Frame Photometry /



Analysis of disappearance time



Analysis of reappearance time

